

FIZ 106E

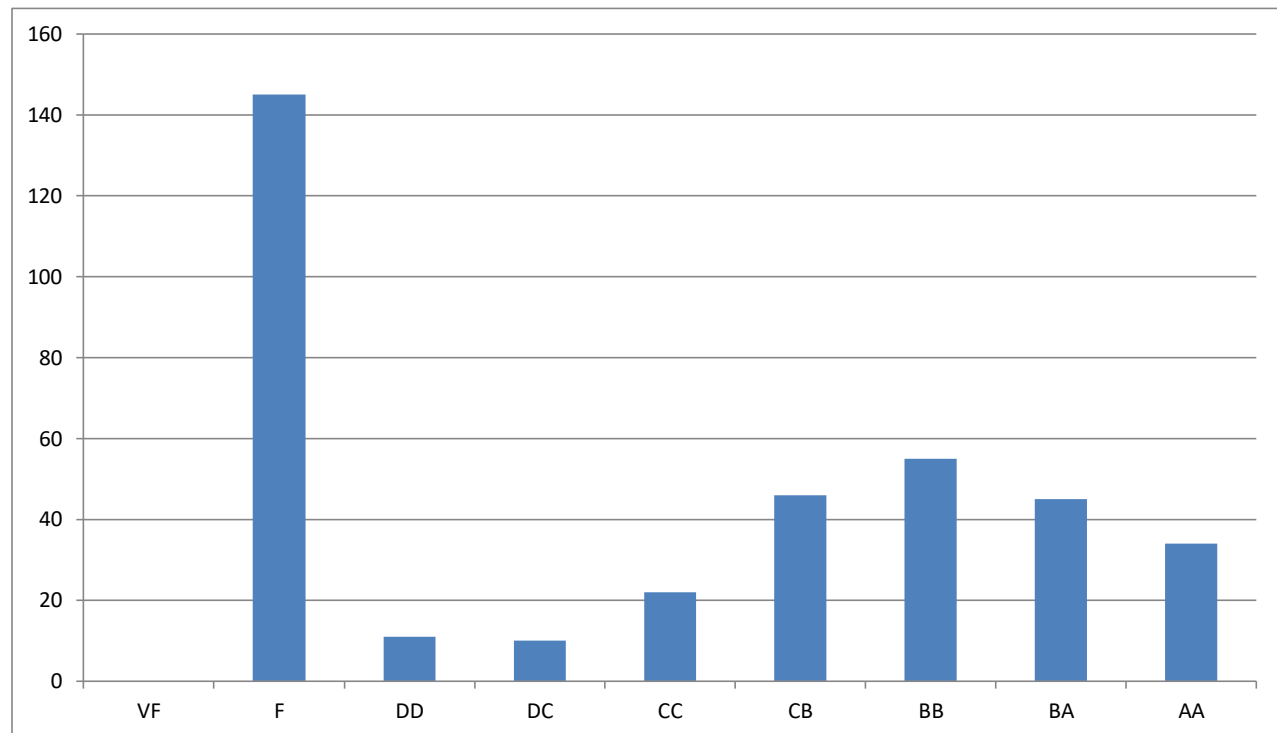
PHYSICS 2

ABET ASSESSMENTS

2016-2017 SPRING - Physics II (FIZ 106E) - STATISTICS

Number of Students:	368	
2016-2017 SPRING		
	Average	Std. Dev.
Homework: /10	0.8	0.3
Midterm 1 : /25	13.1	5.9
Midterm 2 : /25	14.9	4.8
Final: /40	21.3	8.3
Total: /100	50.1	24.1
(VF dahil)	32.2	19.2

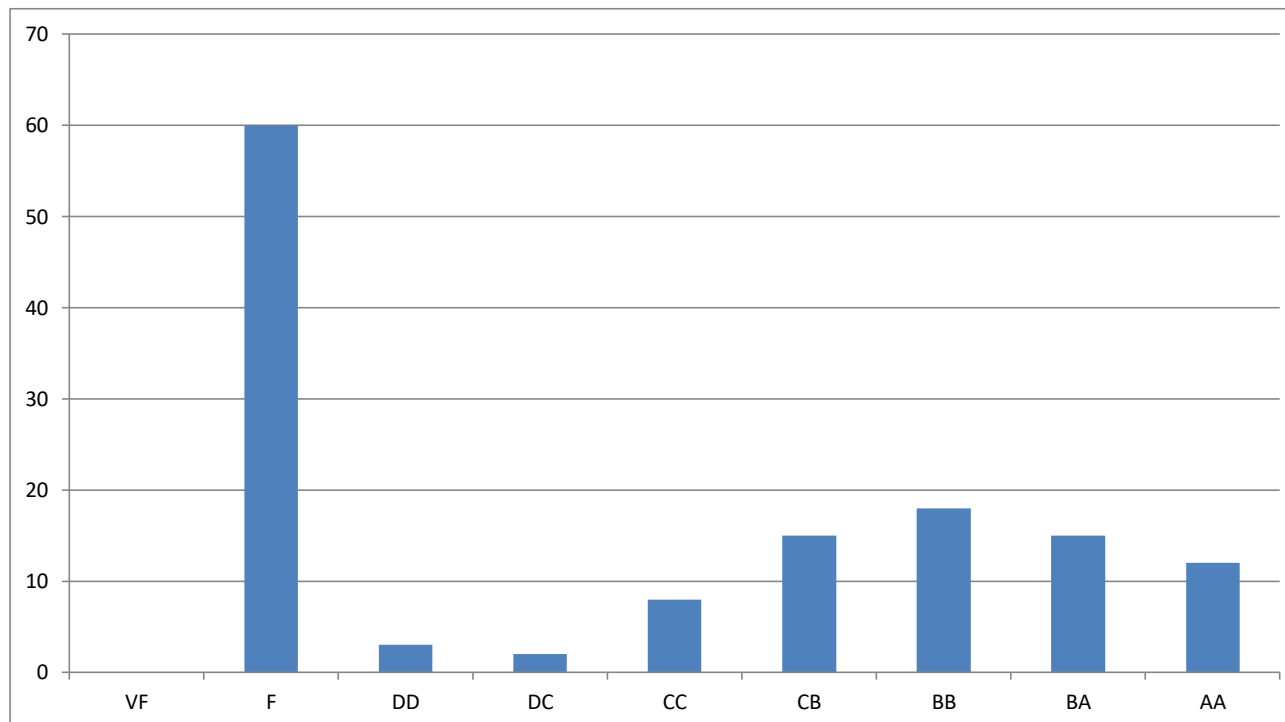
2016-2017 SPRING				
	Interval		# of Stu.	%
AA	80.8	100.0	34	15
BA	69.1	80.7	45	20
BB	60.6	69.0	55	25
CB	53.3	60.5	46	21
CC	51.0	53.2	22	10
DC	49.4	50.9	10	4
DD	47.5	49.3	11	5
F	0.0	47.4	145	39
VF			0	0



2016-2017 FALL - PHYSICS I (FIZ 106E) - STATISTICS

Number of Students:	133	
2016-2017 FALL		
	Average	Std. Dev.
Homework: /10	7.5	3.1
Midterm 1 : /24	10.3	3.6
Midterm 2 : /25	13.3	4.0
Final: /40	22.6	6.6
Total: /100	46.6	21.0
Total: /100 (VFsiz)	46.6	

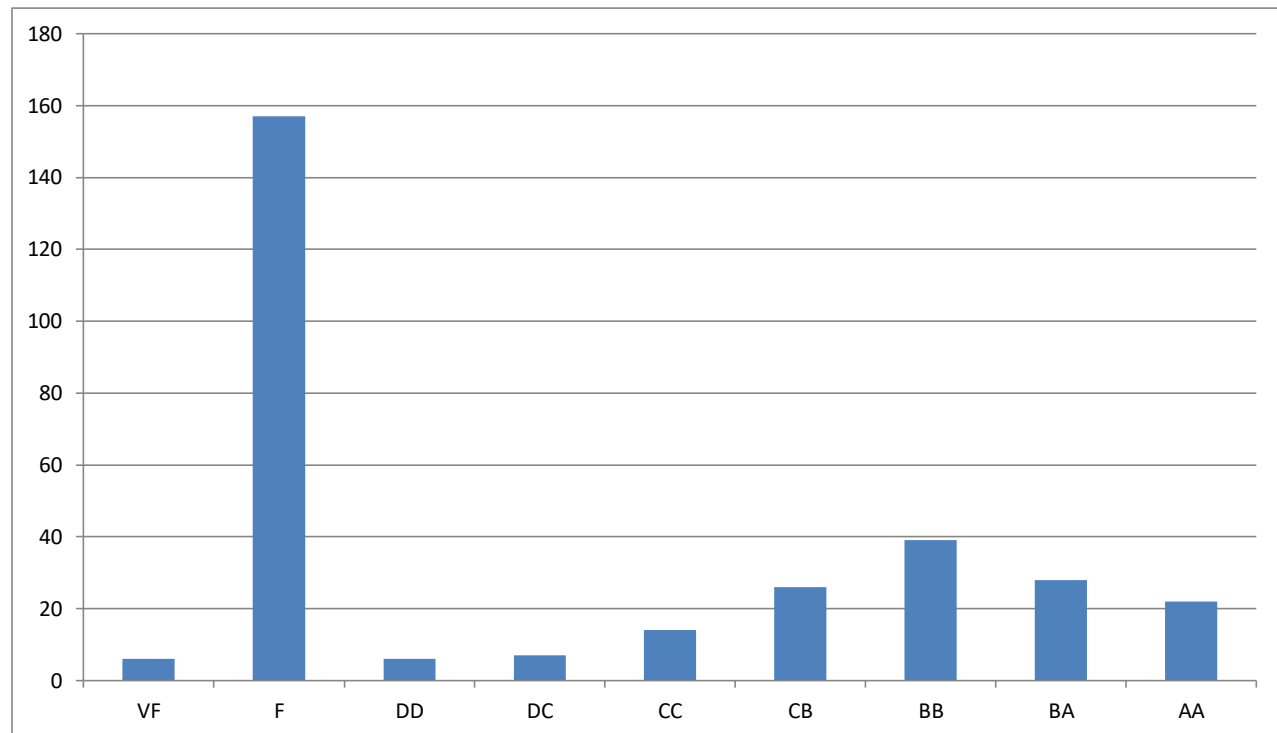
2016-2017 GÜZ				
	Interval		# of Stu.	%
AA	72.0	100.0	12	16
BA	63.8	71.9	15	21
BB	57.7	63.7	18	25
CB	53.4	57.6	15	21
CC	51.2	53.3	8	11
DC	50.9	51.1	2	3
DD	49.5	50.8	3	4
F	0.0	49.4	60	45
VF			0	0



2015-2016 SPRING - Fizik II (FIZ 106E) - STATISTICS

Number of Students:	305	
2015-2016 SPRING		
	Average	Std. Dev.
Homework: /10	0.8	0.3
Midterm 1 : /25	10.3	4.0
Midterm 2 : /25	14.1	3.9
Final: /40	17.6	7.4
Total: /100	44.7	18.5
(VF dahil)	45.5	

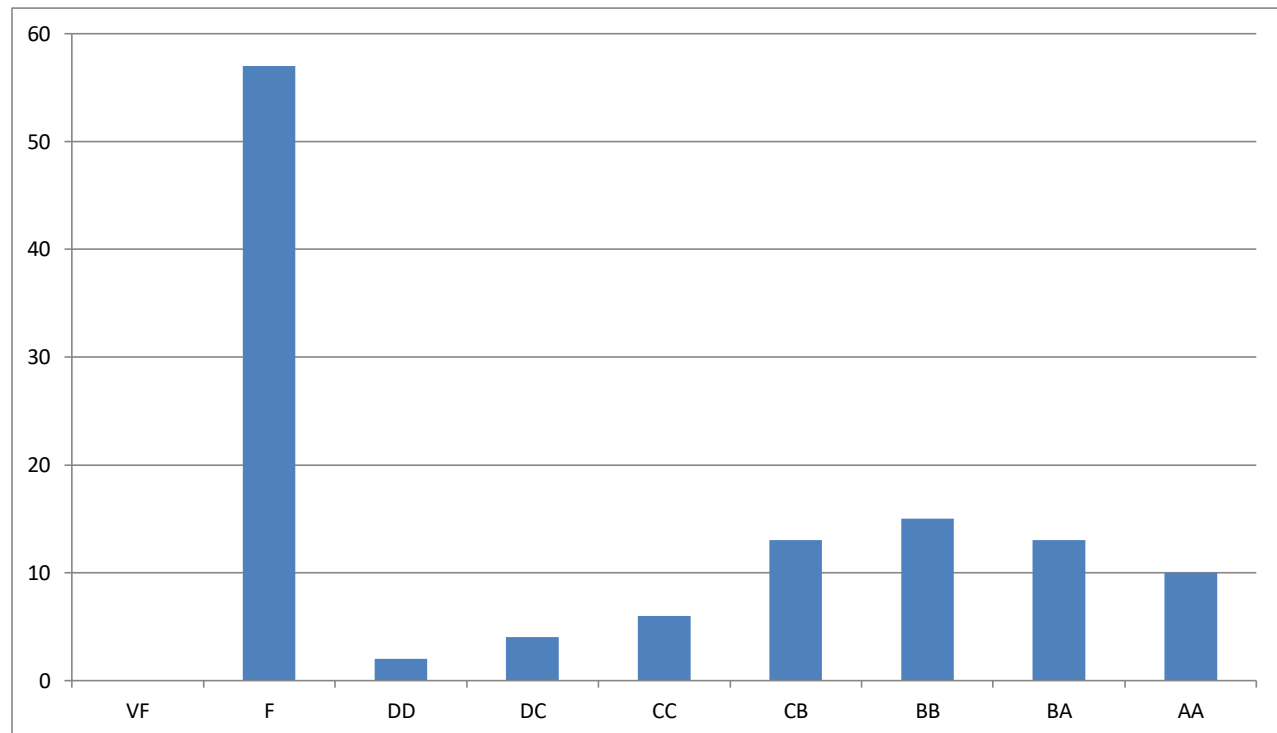
2015-2016 SPRING				
	Interval		# of Stu.	%
AA	70.0	100.0	22	15
BA	60.2	69.9	28	20
BB	55.3	60.1	39	27
CB	52.2	55.2	26	18
CC	50.0	52.1	14	10
DC	49.4	49.9	7	5
DD	48.5	49.3	6	4
F	0.0	48.4	157	53
VF			6	2



2015-2016 FALL - Fizik II (FIZ 106E) - STATISTICS

Number of Students:	120	
2015-16 FALL		
	Average	Std. Dev.
Homework: /10	0.7	0.3
Midterm 1 : /25	18.3	4.0
Midterm 2 : /25	12.2	3.7
Final: /40	21.3	6.4
Total: /100	55.0	19.6
(VF dahil)	32.2	19.2

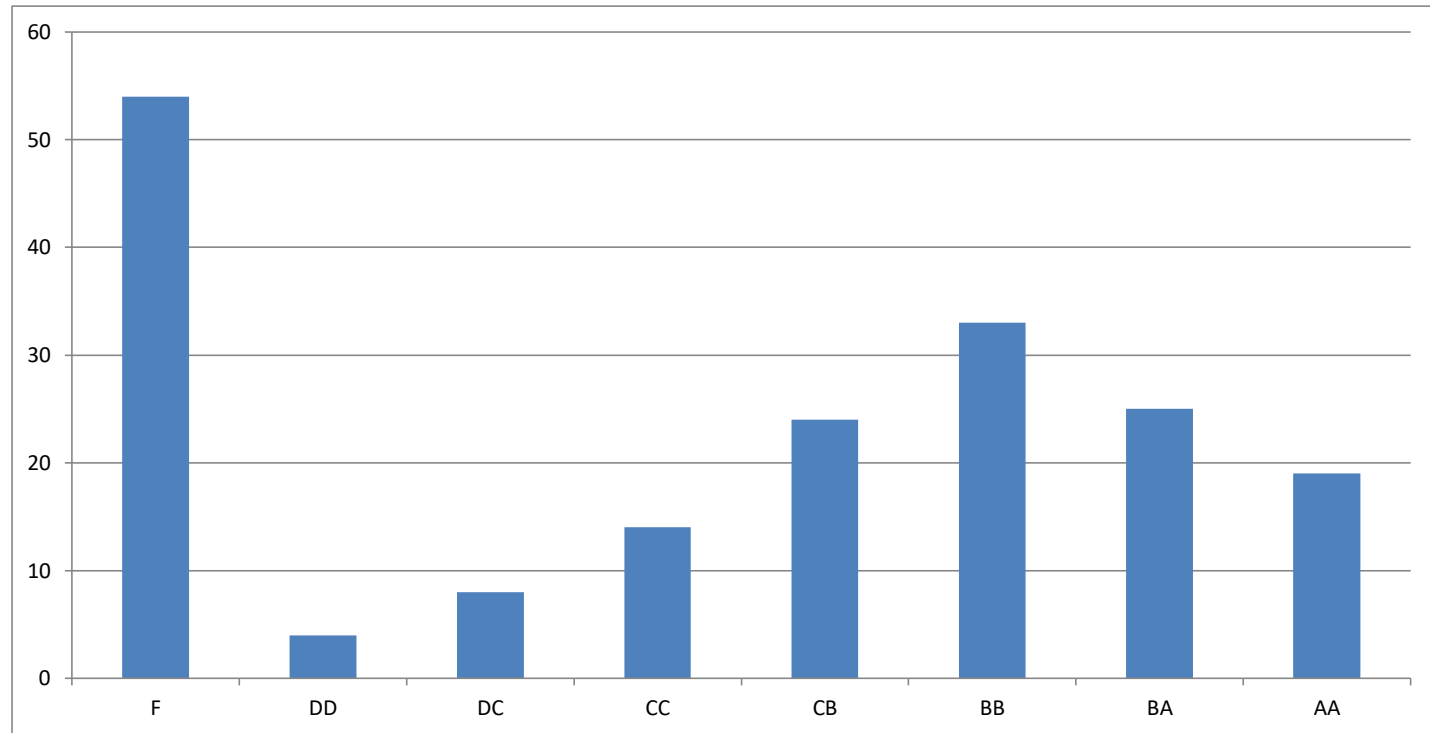
2015-2016 FALL				
	Interval		# of Stu.	%
AA	66.8	100.0	10	16
BA	59.8	66.7	13	21
BB	55.5	59.7	15	24
CB	52.6	55.4	13	21
CC	51.0	52.5	6	10
DC	50.4	50.9	4	6
DD	49.5	50.3	2	3
F	0.0	49.4	57	48
VF			0	0



2014-2015 BAHAR - Fizik II (FIZ 106E) - İSTATİSTİK

Number of Students:	181	
	Average	Std. Dev.
Homework: /10	7.3	2.9
Midterm 1 : /25	14.4	4.4
Midterm 2 : /25	14.6	4.1
Final: /25	16.3	4.5
Total: /100	56.7	20.7

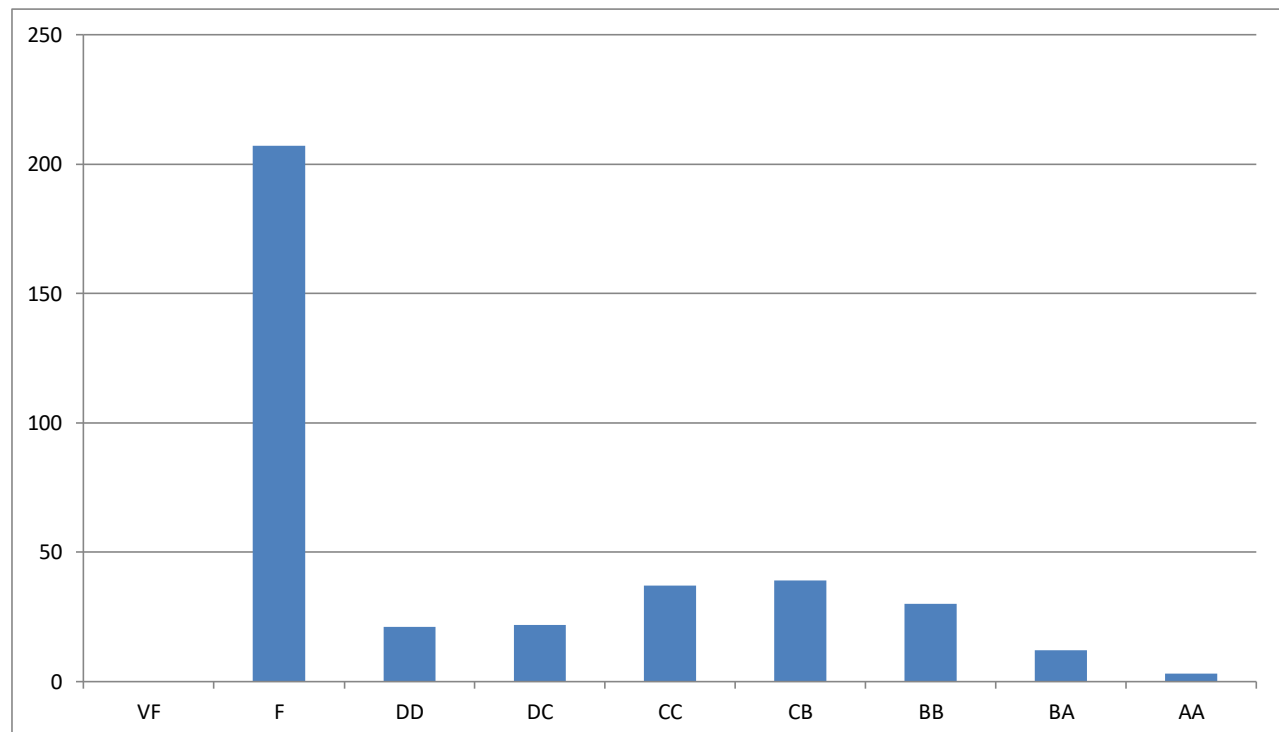
	Interval		# of Stu.	%
AA	80.6	100.0	19	15
BA	71.5	80.5	25	20
BB	64.5	71.4	33	26
CB	56.6	64.4	24	19
CC	53.0	56.5	14	11
DC	51.7	52.9	8	6
DD	49.5	51.6	4	3
F	0.0	49.4	54	30



2014-2015 FALL - Physics II (FIZ 106E) - STATISTICS

Number of Students:	371	
2014-15 FALL		
	Average	Std. Dev.
Homework: /10	#DIV/0!	#DIV/0!
Midterm 1 : /25	11.7	4.0
Midterm 2 : /25	15.5	4.0
Final: /40	20.0	7.8
Total: /100	39.4	19.7
(VF dahil)	32.2	19.2

2014-2015 FALL				
	Interval		# of Stu.	%
AA	76.0	100.0	3	2
BA	69.3	75.9	12	7
BB	62.5	69.2	30	18
CB	55.5	62.4	39	24
CC	50.6	55.4	37	23
DC	47.5	50.5	22	13
DD	44.5	47.4	21	13
F	0.0	44.4	207	56
VF			0	0



2013-2014 SPRING- Physics II (FIZ 106E) - STATISTICS

Number of Students:	259	
2013-14 SPRING		
	Average	Std. Dev.
Homework: /10	0.7	0.3
Midterm 1 : /25	11.5	4.9
Midterm 2 : /25	13.6	5.0
Final: /40	15.6	6.1
Total: /100	43.4	18.7
(VF dahil)	32.2	19.2

2013-2014 SPRING				
	Interval		# of Stu.	%
AA	76.0	100.0	10	8
BA	69.3	75.9	11	8
BB	62.5	69.2	19	15
CB	55.5	62.4	26	20
CC	50.6	55.4	20	15
DC	47.5	50.5	23	18
DD	44.5	47.4	21	16
F	0.0	44.4	129	50
VF			0	0

